

Economic and Demographic Profile of Northern Alberta

Prepared by:
The Northern Alberta Development Council
2005



TABLE OF CONTENTS

INTRODUCTION	1
MAP OF THE NADC AREA	3
A. POPULATION AND DEMOGRAPHICS	4
1. Population and Communities	4
2. Age Distribution of Population	11
3. Mobility.....	15
4. Marital and Family Status	16
B. EDUCATION.....	17
1. Levels of Education.....	17
2. Post-secondary Qualifications	18
C. INCOME.....	19
D. LABOUR FORCE	20
1. Workforce Participation	20
2. Labour Force by Industry	21
3. Labour Force by Occupation.....	24
4. Labour Force by Class of Worker	25
E. INDUSTRY	27
1. Agriculture	27
2. Oil, Gas and Oil Sands	30
3. Forestry.....	31
4. Other Industries.....	32

INTRODUCTION

This [Economic and Demographic Profile of Northern Alberta](#) is a statistical overview of the Northern Alberta Development Council (NADC) region.

The profile is divided into the following five sections:

- Population and Demographics;
- Education;
- Income;
- Labour Force; and
- Industry Sectors.

Most of the information used in this profile is based on the 2001 Census undertaken by Statistics Canada. Several Aboriginal communities were not fully enumerated; as a result, the population counts are lower than the actual population. Community profiles from Indian and Northern Affairs Canada and the Métis Settlements General Council Census have been used to provide a clearer picture of Northern Alberta. The source of information has been indicated throughout this report.

Description of the NADC Region

The NADC area covers approximately 882,818 square kilometers, which is about 60 per cent of Alberta's total area. When the Statistics Canada 2001 Census is used as a single source for information, the region's population is 276,820. This figure does not take into account the Métis Settlements or the First Nations communities that were not completely enumerated. When information from other sources is used to fill in some of the missing census data, the northern population is more than 280,000. The north is home to about 9.3 per cent of the province's total population, including 51 per cent of Alberta's Aboriginal population.

Profile Highlights

- Population levels are growing in some areas, but decreasing in others. The population for the NADC region grew at 12.7 per cent from 1991 to 2001, but lagged behind a provincial growth rate of 16.8 per cent
- The population of Northern Alberta is generally younger than the rest of Alberta. However, the northern population is also on average getting older. Northern Alberta has a higher percentage of people under 20 years old than the rest of Alberta, while the province has a slightly higher percentage of the baby boomers and seniors.
- The high school completion rate is 76 per cent for Northern Alberta and 80 per cent for the rest of Alberta; 13 per cent of the residents in the NADC region have a university degree, while 24 per cent of Alberta residents have a university degree.
- A comparison of income levels shows that the NADC region has a higher percentage than Alberta as a whole of people earning more than \$45,000 per year. Alberta has a higher percentage of those earning between \$15,000 and \$44,900. The north has a slightly higher or equal percentage of individuals earning less than \$14,900 per year
- All of Alberta's oil sands development occurs in Northern Alberta. In 2001, 52 per cent of Alberta's oil production and 38 per cent of the natural gas produced in Alberta came out of

Northern Alberta. Increased exploration and transmission capacity will further enhance natural gas development in the north.

- Northern Alberta boasts the most northern grain region in the world. Gross farm receipts in the NADC region amounted to over \$910 million or about 9.5 per cent of Alberta's total gross farm receipts in 2001.
- 90 per cent of Alberta's forests that are considered potentially productive are located in the north. The northern forestry, wood and paper sector contributes close to 75 per cent towards the forest portion of the provincial gross domestic product.

Disclaimer

Although every effort has been made to maintain the accuracy of the data presented in this document, this data is not intended to be used as a sole resource of information. The NADC and other contributors to this report do not accept responsibility for decisions or action taken on the information presented here in.

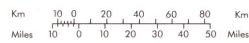
Statistics Canada has indicated the following points should be considered when using the census information.

- On some Indian reserves and Indian settlements in the 2001 Census, enumeration was either incomplete or the quality was inadequate.
- Data for geographic areas containing one or more of these reserves and settlements are therefore noted accordingly. Because of the missing data, users are cautioned that for the affected geographic areas, comparisons (e.g. percentage change) between census years are not exact. While for higher-level geographic areas (Canada, provinces, census metropolitan areas and census agglomerations) the impact of the missing data is very small, the impact can be significant for smaller areas or communities, where the affected reserves and settlements account for a higher proportion of the population.
- Boundaries of geographic areas may change from one census to another.
- The figures shown in the tables have been subjected to a confidentiality procedure known as random rounding to prevent the possibility of associating statistical data with any identifiable individual. Under this method, all figures, including totals and margins, are randomly rounded either up or down to a multiple of 5, and in some cases 10. While providing strong protection against disclosure, this technique does not add significant error to the census data. Minor differences can be expected in corresponding totals and cell values among various census tabulations. Similarly, percentages that are calculated on rounded figures do not necessarily add up to 100 per cent. Data for some areas is not provided if the populations are below a specified size.
- For further information on the census data, contact the Social Survey Methods Division at Statistics Canada, Ottawa, Ontario, Canada K1A 0T6, or by calling (613) 951-4783.

Map of the NADC Region



NORTHERN ALBERTA DEVELOPMENT COUNCIL AREA



Produced by Resource Data Division, Alberta Environmental Protection
 Base map provided by Spatial Data Warehouse
 February 1999

A. POPULATION AND DEMOGRAPHICS

The study of population and demographics trends of a region provides the following important information:

- The rate of population growth is a good indicator of the rates of economic growth.
- The trends of the distribution of the number and age of people in different age groups is a key factor in determining the current and future demand for infrastructure, services and makeup of the labour force.

1. Population of Communities

The information in the following summary shows population growth in all areas with the exception Villages. Growth was highest the Cities and Summer Villages.

Due to the incompletely enumerated Aboriginal communities, the population counts for these communities are higher than what is shown in this table. Consequently, the total NADC area population is also higher than the total shown in this table.

Summary of Population Counts in Community Categories (1991, 1996 and 2001)

Community Type and Number of each Type	1991	1996	2001	Change 1991 to 1996	Change 1996 to 2001	Change 1991 to 2001 (10Yrs)
Cities (2) *	28,271	43,144	48,503	n/a	12%	n/a
Towns (24)	66,737	70,334	70,711	5%	1%	6%
Villages (13)	5,487	5,623	5,102	2%	-9%	-7%
Summer Villages (11)	588	861	971	46%	13%	65%
Rural Municipalities (22)	125,313	126,097	135,554	1%	7%	8%
Métis Settlements (8) **	n/a	n/a	n/a	n/a	n/a	n/a
Indian Reserves (43) **	7,489	13,024	15,979	n/a	n/a	n/a
NADC Area Total	233,885	259,083	276,820	10%	6%	16%

Source: Statistics Canada, 2001 Census

<u>Symbol</u>	<u>Definition</u>
n/a	Figures not appropriate, not applicable or not available.
*	Adjusted figure due to boundary change
**	Incompletely enumerated Métis Settlements, Indian Reserves or Indian Settlements. Not all Indian Reserves and Settlement are included in this count.

Summary of Population With the Addition of the Métis Settlements Information

Community	1996	2001	Percentage Change
NADC Area Total	259,083	276,820	6%
Métis Settlements	n/a	6,577	
NADC Area plus Métis Settlements	259,083	283,397	8%

Source: Statistics Canada, 2001 Census; Métis Settlement General Council Census, 1998

Economic and Demographic Profile of Northern Alberta

The following table compares the population of communities in the NADC Area for 1991, 1996 and 2001. It should be noted that the table uses Statistics Canada categories. Highlights of this table are:

- Grande Prairie experienced 31 per cent growth between 1991 and 2001;
- The Northern Sunrise County (previously named the Municipal District of East Peace No. 131) had the highest rate of growth (32 per cent) for a rural municipality
- Growth in towns ranged from -23 per cent to +31 per cent.
- Indian reserves and Indian settlements have very erratic growth rates due to either incomplete enumeration or inadequate quality of data.

Population of Communities in the NADC Area for 1991, 1996 and 2001

Community	1991	1996	2001	Change 1991 to 1996	Change 1996 to 2001	Change 1991 to 2001 (10Yrs)
Cities						
Cold Lake *	n/a	11,791	11,520	n/a	-2%	n/a
Grande Prairie	28,271	31,353	36,983	11%	18%	31%
Towns						
Athabasca	1,965	2,313	2,415	18%	4%	23%
Beaverlodge	1,779	1,997	2,110	12%	6%	19%
Bonnyville	5,132	5,100	5,709	-1%	12%	11%
Elk Point	1,341	1,403	1,440	5%	3%	7%
Fairview	3,023	3,316	3,150	10%	-5%	4%
Falher	1,183	1,149	1,109	-3%	-3%	-6%
Fox Creek	2,260	2,321	2,337	3%	1%	3%
Grande Cache	3,842	4,441	3,828	16%	-14%	0%
Grimshaw	2,812	2,661	2,435	-5%	-8%	-13%
High Level	2,849	3,093	3,444	9%	11%	21%
High Prairie	2,932	2,907	2,737	-1%	-6%	-7%
Lac la Biche	2,549	2,611	2,776	2%	6%	9%
Manning	1,139	1,295	1,293	14%	0%	14%
McLennan	1,020	867	804	-15%	-7%	-21%
Peace River	6,717	6,536	6,240	-3%	-5%	-7%
Rainbow Lake	817	1,138	976	39%	-14%	19%
Sexsmith	1,260	1,481	1,653	18%	12%	31%
Slave Lake	5,607	6,553	6,600	17%	1%	18%
Spirit River	1,016	1,112	1,100	9%	-1%	8%
St. Paul	4,881	4,880	5,061	0%	4%	4%
Swan Hills	2,348	2,030	1,807	-14%	-11%	-23%
Valleyview	1,980	1,906	1,856	-4%	-3%	-6%
Wembley	1,347	1,441	1,497	7%	4%	11%

Economic and Demographic Profile of Northern Alberta

Community	1991	1996	2001	Change 1991 to 1996	Change 1996 to 2001	Change 1991 to 2001 (10Yrs)
Whitecourt	6,938	7,783	8,334	12%	7%	20%
Villages						
Berwyn	581	606	546	4%	-10%	-6%
Boyle	674	802	836	19%	4%	24%
Donnelly	421	375	377	-11%	1%	-10%
Eaglesham	184	159	n/a	n/a	n/a	n/a
Girouxville	349	332	306	-5%	-8%	-12%
Glendon	403	418	459	4%	10%	14%
Hines Creek	423	437	437	3%	0%	3%
Hythe	623	712	582	14%	-18%	-7%
Kinuso	230	258	231	12%	-10%	0%
Nampa	496	427	372	-14%	-13%	-25%
Plamondon	253	263	347	4%	32%	37%
Rycroft	634	667	609	5%	-9%	-4%
Wanham	216	167	n/a	n/a	n/a	n/a
Summer Villages						
Bondiss	65	86	104	32%	21%	60%
Bonnyville Beach	55	64	74	16%	16%	35%
Horseshoe Bay	n/a	37	52	n/a	n/a	n/a
Island Lake South	65	76	71	17%	-7%	9%
Island Lake	122	187	199	53%	6%	63%
Mewatha Beach	40	76	101	90%	33%	153%
Pelican Narrows	98	106	112	8%	6%	14%
South Baptiste	65	66	44	2%	-33%	-32%
Sunset Beach	n/a	33	50	n/a	n/a	n/a
West Baptiste	30	51	46	70%	-10%	53%
Whispering Hills	48	79	118	65%	49%	146%
Rural Municipalities						
Athabasca County No. 12	6,621	7,415	7,485	12%	1%	13%
MD of Big Lakes	4,913	5,830	5,845	19%	0%	19%
Birch Hills County	1,378	1,682	1,644	22%	-2%	19%
Bonnyville MD No. 87 *	17,506	8,977	9,473	-49%	6%	-46%
Clear Hills MD No. 21	2,903	2,886	2,772	-1%	-4%	-5%
Fairview MD No. 136	1,812	1,829	1,806	1%	-1%	0%
Grande Prairie County No. 1	12,314	13,537	15,638	10%	16%	27%
Greenview MD No. 16	5,384	5,433	5,439	1%	0%	1%

Economic and Demographic Profile of Northern Alberta

Community	1991	1996	2001	Change 1991 to 1996	Change 1996 to 2001	Change 1991 to 2001 (10Yrs)
Improvement District No. 24	286	370	369	29%	0%	29%
Lakeland County *	n/a	4,842	4,959	n/a	n/a	n/a
Lesser Slave River MD No.124	2,285	2,716	2,825	19%	4%	24%
Mackenzie No. 23	7,260	7,980	8,829	10%	11%	22%
Northern Lights MD No. 22	4,259	4,462	4,217	5%	-5%	-1%
Northern Sunrise County	1,612	2,264	2,123	40%	-6%	32%
Opportunity MD No. 17	2,648	3,060	3,436	16%	12%	30%
Peace MD No. 135	1,481	1,562	1,496	5%	-4%	1%
Saddle Hills County	2,722	2,724	2,566	0%	-6%	-6%
Smoky River MD No. 130	2,613	2,491	2,379	-5%	-4%	-9%
Spirit River MD No. 133	812	809	824	0%	2%	1%
St. Paul County No. 19	6,489	6,316	6,145	-3%	-3%	-5%
Regional Municipality of Wood Buffalo	36,771	35,213	41,466	-4%	18%	13%
Woodlands County	3,244	3,699	3,818	14%	3%	18%
Indian Reserves & Settlements **						
Allison Bay 219	n/a	n/a	111	n/a	n/a	n/a
Beaver Lake 131	n/a	306	390	n/a	27%	n/a
Boyer 164	94	118	172	26%	46%	83%
Bushe River 207	116	166	318	43%	92%	174%
Child Lake 164A	104	121	156	16%	29%	50%
Cold Lake 149	408	542	439	33%	-19%	8%
Cold Lake 149A	40	n/a	n/a	n/a	n/a	n/a
Cold Lake 149B	105	93	110	-11%	18%	5%
Desmarais S-E	430	122	112	-72%	-8%	-74%
Dog Head 218	61	115	93	89%	-19%	52%
Drift Pile River 150	345	622	655	80%	5%	90%
Duncan's 151A	63	104	121	65%	16%	92%
Fort Mackay S-E	256	347	437	36%	26%	71%
Fox Lake 162	942	1,290	1,254	37%	-3%	33%
Freeman 150B	49	n/a	n/a	n/a	n/a	n/a
Gregoire Lake 176	63	70	105	11%	50%	67%
Gregoire Lake 176A	59	118	133	100%	13%	125%
Hay Lake 209	773	838	915	8%	9%	18%
Heart Lake 167	n/a	n/a	124	n/a	n/a	n/a
Horse Lakes 152B	224	322	324	44%	1%	45%
Janvier 194	186	254	252	37%	-1%	35%
Jean Baptiste Gambler 183	94	n/a	n/a	n/a	n/a	n/a
John d'Or Prairie 215	601	713	851	19%	19%	42%

Economic and Demographic Profile of Northern Alberta

Community	1991	1996	2001	Change 1991 to 1996	Change 1996 to 2001	Change 1991 to 2001 (10Yrs)
Kehewin 123	n/a	854	991	n/a	16%	n/a
Puskiakiwenin 122	n/a	292	432	n/a	48%	n/a
Sawridge 150G	34	62	59	82%	-5%	74%
Sturgeon Lake 154	509	910	871	79%	-4%	71%
Sucker Creek 150A	n/a	471	549	n/a	17%	n/a
Swan River 150E	172	303	307	76%	1%	78%
Tall Cree 173	134	183	173	37%	-5%	29%
Tall Cree 173A	179	190	183	6%	-4%	2%
Unipouheos 121	n/a	528	586	n/a	11%	n/a
Upper Hay River 212	333	338	347	2%	3%	4%
Utikoomak Lake 155	n/a	n/a	812	n/a	n/a	n/a
Utikoomak Lake 155A	n/a	n/a	121	n/a	n/a	n/a
Wabasca 166	27	42	74	56%	76%	174%
Wabasca 166A	347	488	510	41%	5%	47%
Wabasca 166B	40	54	161	35%	198%	303%
Wabasca 166C	72	187	182	160%	-3%	153%
Wabasca 166D	404	496	860	23%	73%	113%
White Fish Lake 128	n/a	1,049	1,175	n/a	12%	n/a
Woodland Cree 226	225	316	417	40%	32%	85%
Woodland Cree 228	n/a	n/a	97	n/a	n/a	n/a
Métis Settlements **	n/a	n/a	n/a	n/a	n/a	n/a

Source: Statistics Canada, 2001 Census

Symbol

n/a

*

**

Definition

Figures not appropriate, not applicable or not available

Adjusted figure due to boundary change

Incompletely enumerated Métis Settlements, Indian Reserves or Indian Settlements

Individuals Who Identified Themselves as Aboriginal

Population Group	NADC	Aboriginal Groups as % of NADC Area Population	Alberta	Aboriginal Groups as % of the Alberta Population
Total Population	274,510	n/a	2,940,480	n/a
Total Aboriginal	48,870	18%	155,765	5%
North American Indian	28,705	10%	84,735	3%
Métis	18,950	7%	66,040	2%
Non-Aboriginal population	225,665	82%	2,784,690	95%

Source: Statistics Canada, 2001 Census

Economic and Demographic Profile of Northern Alberta

Individuals Who Identified Themselves as Having an Aboriginal Ethnic Origin

Population Group	NADC	Groups as % of NADC Area Population	Alberta	Groups as % of the Alberta Population
Total Population	274,525	n/a	2,940,425	n/a
Aboriginal origins	53,605	20%	198,540	7%
Non-Aboriginal population	220,855	80%	2,741,695	93%

Source: Statistics Canada, 2001 Census

Population of Aboriginals that Hold First Nations Status and are Registered with Indian and Northern Affairs Canada

First Nation	Reserves / Settlements	2003 Population	1997 Population	Percent Change
Athabasca Chipewyan First Nation	Fort Chipewyan 201, 201A, 201B, 201C, 201D, 201E, 201F, 201G	739	637	16%
Beaver First Nation	Boyer 164, Child Lake 164A	719	647	11%
Beaver Lake Cree Nation	Beaver Lake 131	823	725	14%
Big Stone Cree Nation	Wabasca 166, 166A, 166B, 166C, 166D, Jean Baptiste Gambler 183, Desmarais Settlement	6,001	5,248	14%
Chipewyan Prairie First Nation	Janvier 194, Cowper Lake Reserve 194A, Winefred Lake Reserve 194B	611	535	14%
Cold Lake First Nation	Cold Lake 149, 149A, 149B	2,105	1,892	11%
Dene Tha'	Amber River 211, Bistcho Lake 213, Bushe River 207, Hay Lake 209, Jackfish Point 214, Upper Hay River 212, Zama Lake 210	2,358	2,235	6%
Drift Pile First Nation	Drift Pile River 150	2,013	1,768	14%
Duncans First Nation	Duncans 151A, William McKenzie 151K	201	168	20%
Fort McKay First Nation	Fort McKay 174, Namur River 174A, 174B, Fort McKay Settlement	551	466	18%
Fort McMurray	Clearwater 175, Gregoire Lake 176, 176A, 176B	556	495	12%
Frog Lake	Unipuoheos 121, Puskiakiwenin 122	2,142	1,734	24%
Heart Lake	Heart Lake 167, 167A	268	225	19%
Horse Lake First Nation	Clear Hills 152C, Horse Lakes 152B	745	606	23%
Kapawe'no First Nation	Kapawe'no First Nation 150B, 150C, 150D, 229, 230, 231	270	227	19%
Kehewin Cree Nation	Kehewin 123	1,600	1,416	13%
Little Red River Cree Nation	Fox Lake 162, John D'or Prairie 215, Garden Creek Settlement	3,602	2,996	20%

Economic and Demographic Profile of Northern Alberta

First Nation	Reserves / Settlements	2003 Population	1997 Population	Percent Change
Loon River Cree Nation	Loon Lake Reserve 235, Swampy Lake Reserve 236, Loon Prairie Reserve 237	407	363	12%
Lubicon Lake Band	No Reserve or Settlement Information	n/a	321	n/a
Mikisew Cree First Nation	Old Fort 217, Dog Head 218, Allison Bay 219, Devil's Gate 220, Sandy Point 221, Peace Point 222, Collin Lake 223, Cornwall Lake 224, Charles Lake 225	2,287	2,012	14%
Saddle Lake	Saddle Lake 125, White Fish Lake 128	7,972	7,147	12%
Sawridge	Sawridge 150G, 150H	n/a	315	n/a
Smith's Landing First Nation	No Reserve or Settlement Information	292	n/a	n/a
Sturgeon Lake Cree Nation	Sturgeon Lake 154, 154A, 154B	2,286	1,922	19%
Sucker Creek	Sucker Creek 150A	2,094	1,791	17%
Swan River First Nation	Swan River 150E, Assinneau River 150F	977	885	10%
Tall Cree	Beaver Ranch 163, 163A, 163B, Tall Cree 173, 173A, Fort Vermillion 173B, Wadlin Lake 173C	1,003	865	16%
Whitefish Lake	Utikoomak Lake 155, 155A, 155	1,897	1,625	17%
Woodland Cree First Nation	Woodland Cree 226, 227, 228, Cadotte Lake Settlement	887	784	13%
NADC Area First Nation Population Total		45,406	40,050	13%
Alberta First Nation Population Total		87,223	78,292	11%
NADC First Nation Population as % of Alberta		52%	51%	

Source: Indian and Northern Affairs Canada; 1997 & 2003 First Nations Community Profiles

Métis Settlement Population, 1998

Métis Settlement	Population
Buffalo Lake Métis Settlement	1,026
East Prairie Métis Settlement	551
Elizabeth Métis Settlement	763
Fishing Lake Métis Settlement	623
Gift Lake Métis Settlement	911
Kikino Métis Settlement	1,052
Paddle Prairie Métis Settlement	1,028
Peavine Métis Settlement	623
Total	6,577

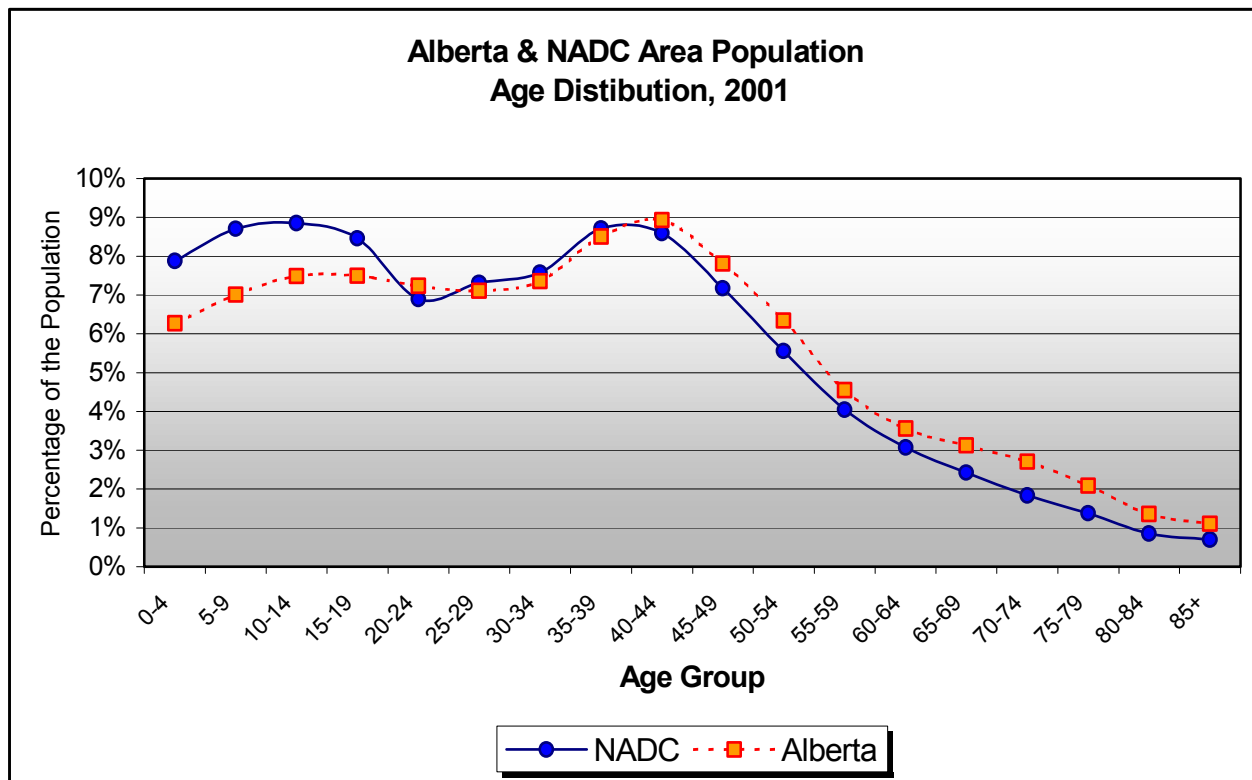
Source: Métis Settlements General Council Census, 1998

2. Age Distribution of Population

The population counts used for the following graphs and tables have been rounded to the nearest five. The resulting area totals will not be the same as in previous tables or charts.

The following chart and table compare the Alberta and NADC area populations. Several key differences between the two regions are:

- The percentages of the population in the age groups from 0-19 are significantly higher in the NADC region.
- The percentage of the NADC population over 45 is consistently below the Alberta percentage.
- The steep drop in the NADC percentage trend line for the age groups 15-29 to below the Alberta average may reflect young people leaving the NADC region for post-secondary education. The upward trend, but still below the Alberta average, for the age groups 30-40 may reflect former residents returning from school or others coming to the region to take advantage of employment opportunities.



Source: Statistics Canada, 2001 Census

Alberta and NADC Area Age Distribution

Age Group	NADC Area	Percent of NADC Area	Alberta	Percent of Alberta
0-4	21,805	7.9%	186,355	6.3%
5-9	24,085	8.7%	208,360	7.0%
10-14	24,485	8.8%	222,650	7.5%
15-19	23,405	8.5%	222,895	7.5%
20-24	19,090	6.9%	215,060	7.2%
25-29	20,230	7.3%	211,415	7.1%
30-34	20,960	7.6%	218,770	7.4%
35-39	24,110	8.7%	252,830	8.5%
40-44	23,780	8.6%	265,505	8.9%
45-49	19,840	7.2%	232,225	7.8%
50-54	15,365	5.6%	188,480	6.3%
55-59	11,200	4.0%	135,140	4.5%
60-64	8,485	3.1%	105,820	3.6%
65-69	6,710	2.4%	92,860	3.1%
70-74	5,080	1.8%	80,410	2.7%
75-79	3,800	1.4%	61,950	2.1%
80-84	2,350	0.8%	40,455	1.4%
85+	1,935	0.7%	32,880	1.1%
All Age Groups	276,715	100.0%	2,974,060	100%

Source: Statistics Canada, 2001 Census

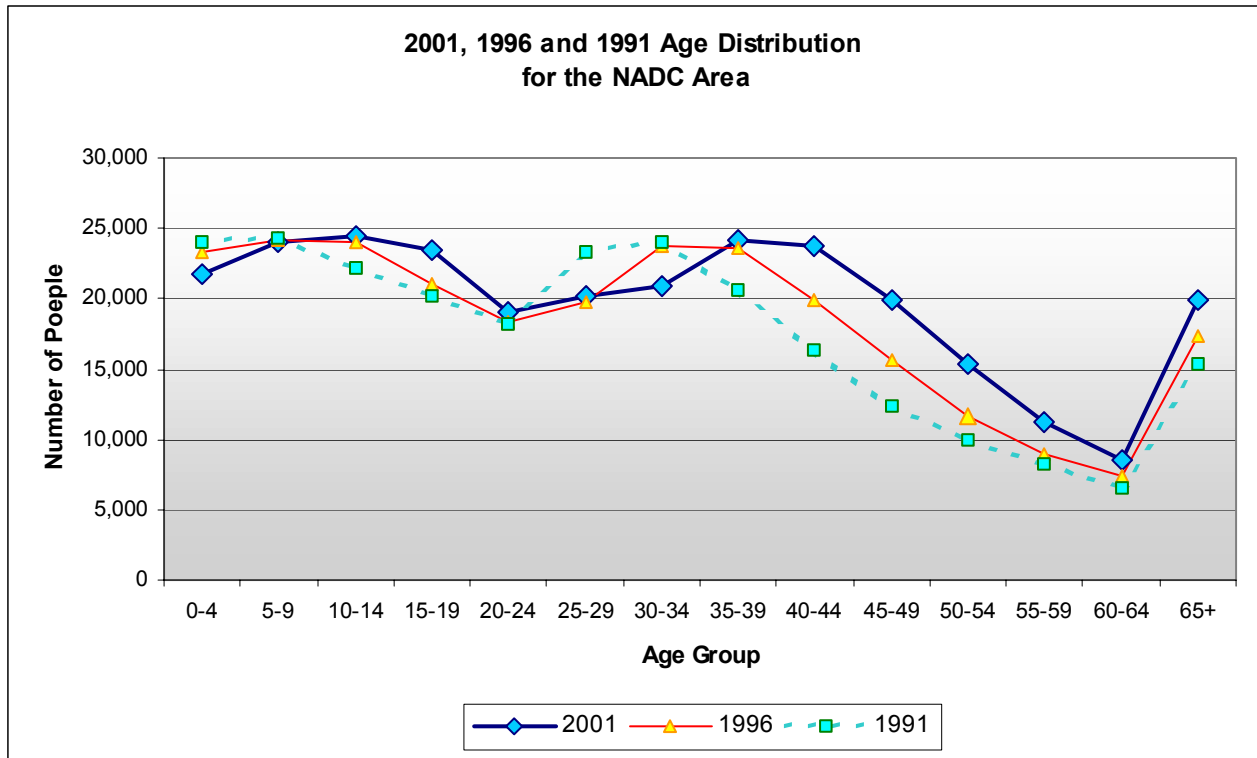
The two charts on the following page show population trends in Northern Alberta for three census periods: 1991, 1996 and 2001. It is possible to follow a segment of the population over the 10-year period. For example, in 1991 the 10-14 group had a population of 22,175; in 1996, this group was in the 15-19 age group, which had a population of about 21,085.

For the 2001 census, this group – now 20-24 years old – had a population of 19,090.. The next census will show whether there will be a rebound in this group and whether they return to the region to increase their numbers to the previous levels of about 22,500.

There are a number of observations that can be made from the following charts, although one should be cautious about making sweeping generalizations based on only 10 years of data.

- The charts show that in this time frame (1991-2001), there is a decline in the population for the 0-4 age group and an increase in the 10-29 age groups..
- There would appear to be some rebound in population levels 25-29 and 30-34 from this decline as former residents return or new ones come to the region.
- For those now 35 to 64, there is only a slight decline in the population levels as the population goes through the different age groups.
- The age group 60-64 had a steeper increase over the last 10 years.
- Overall ,there is a significant increase in the size of the population between 35 and 60 years old since 1991.

Economic and Demographic Profile of Northern Alberta



Source: Statistics Canada, 2001 Census

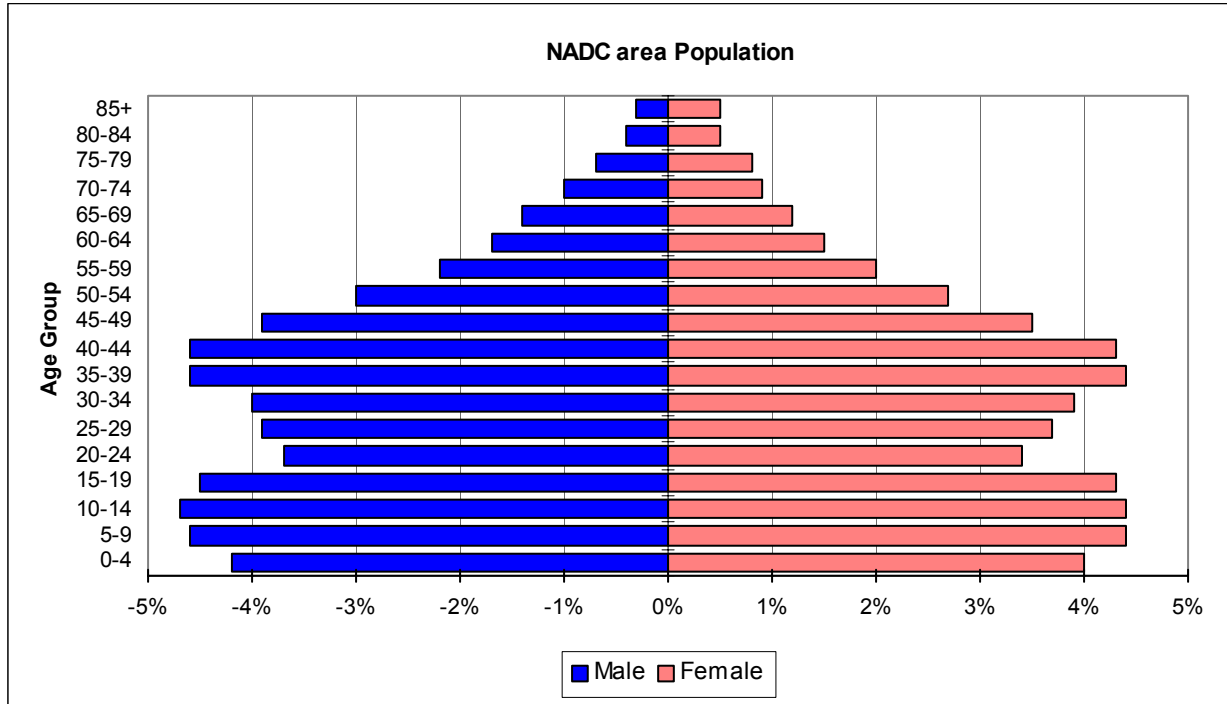
2001, 1996 and 1991 Age Distribution for the NADC Area

Age Group	2001 Population	Percentage of 2001	1996 Population	Percentage of 1996	1991 Population	Percentage of 1991
0-4	21,805	7.9%	23,330	9.0%	23,975	9.8%
5-9	24,085	8.7%	24,165	9.3%	24,275	9.9%
10-14	24,485	8.8%	24,030	9.3%	22,175	9.0%
15-19	23,405	8.5%	21,085	8.1%	20,120	8.2%
20-24	19,090	6.9%	18,300	7.1%	18,270	7.4%
25-29	20,230	7.3%	19,780	7.6%	23,260	9.5%
30-34	20,960	7.6%	23,765	9.2%	24,030	9.8%
35-39	24,110	8.7%	23,660	9.1%	20,660	8.4%
40-44	23,780	8.6%	19,920	7.7%	16,415	6.7%
45-49	19,840	7.2%	15,580	6.0%	12,310	5.0%
50-54	15,365	5.6%	11,715	4.5%	9,890	4.0%
55-59	11,200	4.0%	8,990	3.5%	8,210	3.3%
60-64	8,485	3.1%	7,405	2.9%	6,545	2.7%
65+	19,875	7.2%	17,325	6.7%	15,360	6.3%
Total	276,770	100.0%	259,050	100.0%	245,495	100.0%

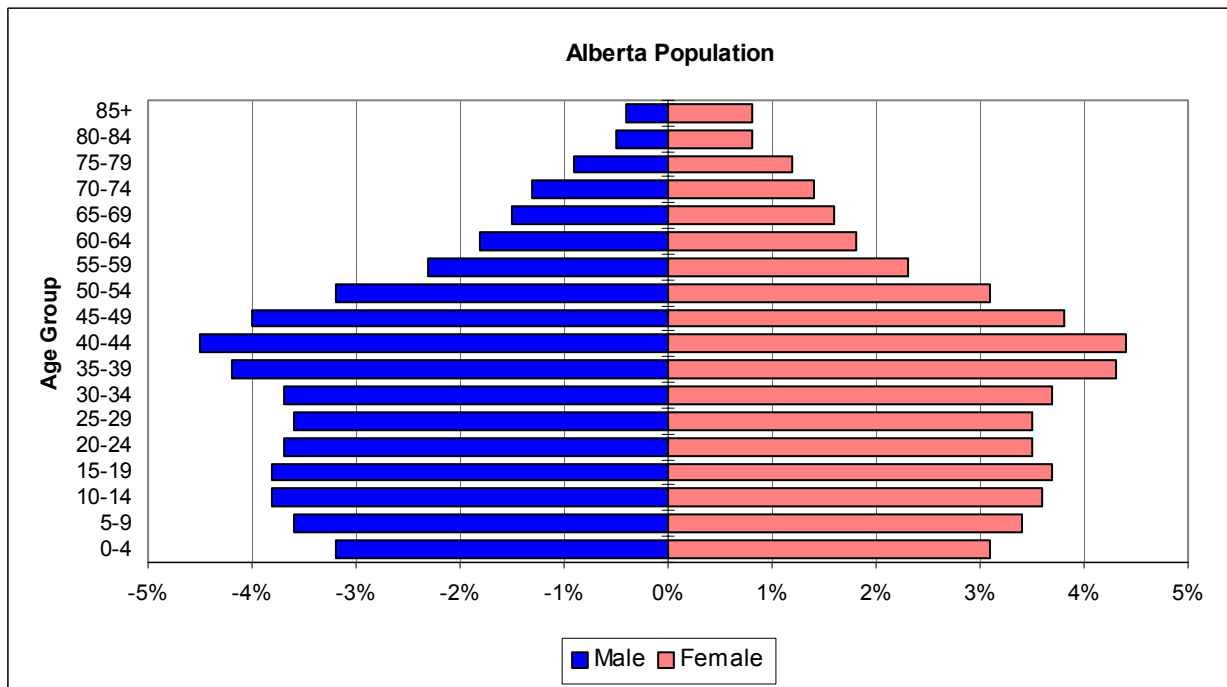
Source: Statistics Canada, 2001 Census

Age and Gender Distribution

Both the NADC region and Alberta as a whole have more females than males in the age groups over 75. For the most part the north has more males than female in the age groups from 10 to 75 years of age.



Source: Statistics Canada, 2001 Census



Source: Statistics Canada, 2001 Census

3. Mobility

While the NADC region has a similar percentage of movers than the province, there is a greater percentage of migrants coming to the north from other parts of Alberta and Canada.

Mobility Status over a 1-Year Period

Mobility Status	NADC	Percent of NADC	Alberta	Percent of Alberta
Population by mobility status 1 year ago	270,300	100%	2,904,610	100%
Non-movers	222,250	82%	2,392,145	82%
Movers	48,020	18%	512,515	18%
Movers				
Movers	48,020	100%	512,515	100%
Non-migrants	24,590	51%	308,105	60%
Migrants	23,435	49%	204,440	40%
Internal migrants	22,390	47%	177,840	35%
Intra-provincial migrants	14,400	30%	109,855	21%
Inter-provincial migrants	7,945	17%	67,925	13%
External migrants	1,075	2%	26,645	5%

Source: Statistics Canada, 2001 Census

Note that Statistics Canada uses the term “Mobility Status” to refer to the relationship between a person’s usual place of residence on the day the census was taken and that person’s place of residence one or five years earlier.

Other terms with specific classifications by Statistics Canada include:

- Non-movers: Individuals for whom there is no difference in residence over a specified period of time.
- Movers: Individuals who have changed residence over the specified time period.
- Non-migrants: Individuals who have moved to a different address within the same community.
- Migrants: Individuals who have moved from a different community.
 - External migrants: Individuals who have moved from outside the country.
 - Internal migrants: Individuals who have moved from somewhere within Canada.
 - Intra-provincial migrants: Individuals who have moved from somewhere within the same province.
 - Inter-provincial migrants: Individuals who have moved from another province.

Mobility Status Over a 5-Year Period

Mobility Status	NADC	Percent of NADC	Alberta	Percent of Alberta
Population by mobility status 5 years ago	252,625	100%	2,753,120	100%
Non-movers	132,370	52%	1,399,160	51%
Movers	120,330	48%	1,353,925	49%
Movers	120,330	100%	1,353,925	100%
Non-migrants	54,530	45%	725,750	54%
Migrants	65,820	55%	628,280	46%
Internal migrants	63,355	53%	548,520	41%
Intra-provincial migrants	37,760	31%	306,300	23%
Inter-provincial migrants	25,505	21%	242,105	18%
External migrants	2,500	2%	79,710	6%

Source: Statistics Canada, 2001 Census

4. Marital and Family Status

The percentage of married and separated couples is the same for both Northern Alberta and Alberta. There are more single adults and fewer divorced and widowed individuals in the north.

Marital Status

Marital Status	NADC	Percent of NADC	Alberta	Percent of Alberta
Population 15 yrs & over	206,390	100%	2,356,640	100%
Never legally married (single)	71,250	35%	770,155	33%
Legally married (not separated)	107,525	52%	1,223,765	52%
Separated, but still legally married	5,925	3%	67,605	3%
Divorced	13,480	7%	177,960	8%
Widowed	8,155	4%	117,230	5%

Source: Statistics Canada, 2001 Census

Family Status

Family Status	NADC	Percent of NADC	Alberta	Percent of Alberta
Total couple families by family structure	65,085	87%	694,385	86%
Married couples	52,990	70%	600,685	74%
Common-law couples	12,100	16%	93,665	12%
Total lone-parent families by sex of parent	10,105	13%	116,385	14%
Female parent	7,445	10%	92,785	11%
Male parent	2,665	4%	23,470	3%

Source: Statistics Canada, 2001 Census

B. EDUCATION

1. Levels of Education

The table below shows that:

- Northern Alberta has a higher percentage of individuals with trades certificates and diplomas than the province in general.
- The percentage of the population that has a college education is very close to the provincial average with 22 per cent for the north compared to 24 per cent for the province.
- Of concern is the 10 per cent of the NADC population who do not have Grade 9 compared to six per cent for the province.

Level of Education

Highest Level of Schooling	NADC Area	Percent of NADC Area	Alberta	Percent of Alberta
Total population 20 years and over	180,550	100%	2,099,835	100%
Less than grade 9	17,215	10%	130,410	6%
Grades 9 to 13	65,600	36%	660,955	31%
Without high school graduation certificate	43,770	24%	421,225	20%
With high school graduation certificate	21,855	12%	239,715	11%
Trades certificate or diploma	33,105	18%	294,855	14%
College	40,370	22%	509,860	24%
Without certificate or diploma	13,580	8%	153,975	7%
With certificate or diploma	26,830	15%	355,880	17%
University	24,215	13%	503,680	24%
Without degree	8,275	5%	153,970	7%
Without certificate or diploma	5,320	3%	107,845	5%
With certificate or diploma	3,025	2%	46,220	2%
With bachelor's degree or higher	15,945	9%	349,680	17%

Source: Statistics Canada, 2001 Census

2. Post-secondary Qualifications

Applied science technologies or trades are the common post-secondary qualification held by men in northern Alberta. One third of northern women with post-secondary qualifications have commerce, management or business administration as their field of study.

Post-secondary Qualifications for Males

Major Field of Study	NADC Area	Percent of NADC Area	Alberta	Percent of Alberta
Males with postsecondary qualifications	42,750	100%	538,685	100%
Educational, recreational & counselling services	2,530	6%	30,925	6%
Fine & applied arts	700	2%	14,970	3%
Humanities & related fields	995	2%	21,000	4%
Social sciences & related fields	2,110	5%	38,080	7%
Commerce, management & business administration	2,890	7%	73,475	14%
Agricultural, biological, nutritional & food sciences	1,990	5%	29,405	5%
Engineering & applied sciences	2,125	5%	43,065	8%
Applied science technologies & trades	27,190	64%	238,900	44%
Health professions & related technologies	1,515	4%	23,225	4%
Mathematics, computer & physical sciences	590	1%	24,670	5%
No specialization	35	0%	920	0%

Source: Statistics Canada, 2001 Census

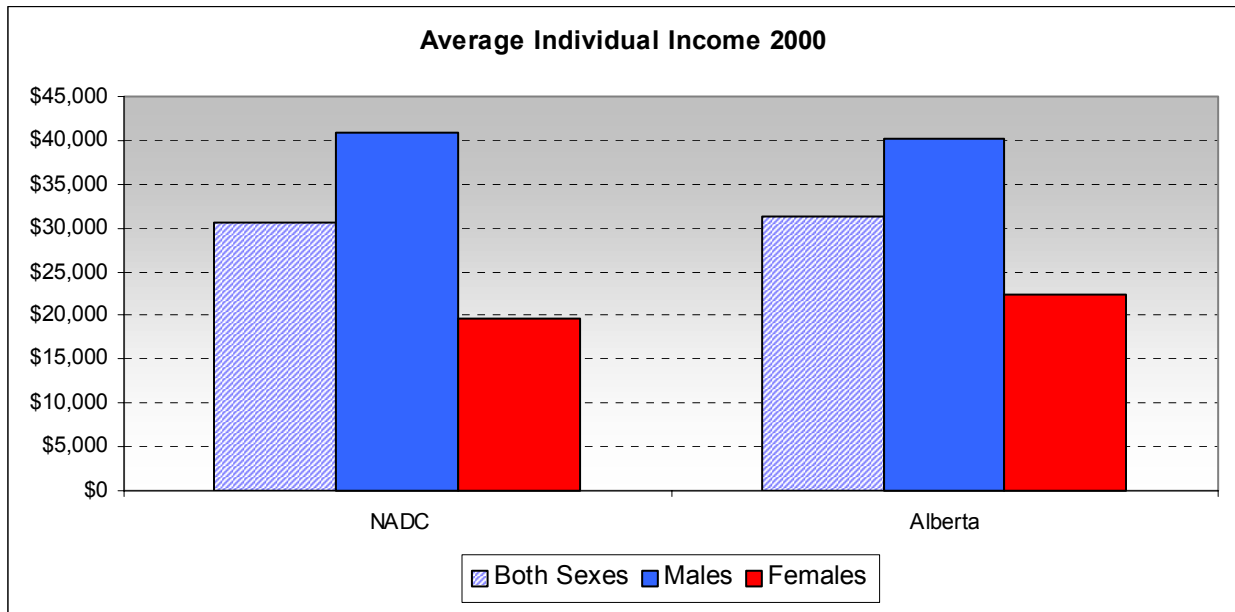
Post-secondary Qualifications for Females

Major Field of Study	NADC Area	Percent of NADC Area	Alberta	Percent of Alberta
Females with postsecondary qualifications	36,690	100%	512,985	100%
Educational, recreational & counselling services	6,710	18%	82,300	16%
Fine & applied arts	2,625	7%	37,720	7%
Humanities & related fields	1,105	3%	27,320	5%
Social sciences & related fields	2,985	8%	47,630	9%
Commerce, management & business administration	11,270	31%	146,360	29%
Agricultural, biological, nutritional & food sciences	1,865	5%	24,680	5%
Engineering & applied sciences	380	1%	7,280	1%
Applied science technologies & trades	2,440	7%	26,530	5%
Health professions & related technologies	6,745	18%	100,075	20%
Mathematics, computer & physical sciences	460	1%	11,880	2%
No specialization	70	0%	1,135	0%

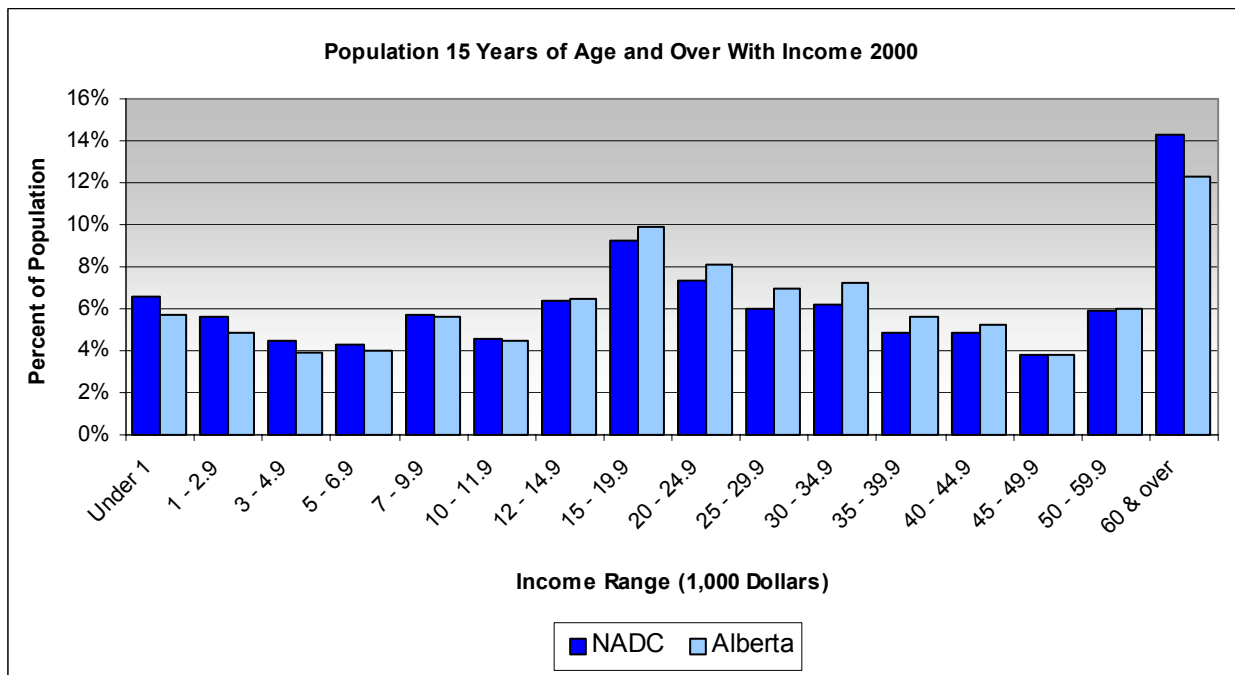
Source: Statistics Canada, 2001 Census

C. INCOME

A comparison of income levels shows that the NADC region has a slightly higher percentage of people earning more than \$45,000 per year than Alberta as a whole. Alberta has a higher percentage of those earning between \$15,000 and \$44,900 while the north has a slightly higher or equal percentage of individuals earning less than \$14,900 per year.



Source: Statistics Canada, 2001 Census



Source: Statistics Canada, 2001 Census

D. LABOUR FORCE

1. Workforce Participation

Workforce participation and employment rates of both males and females are higher for the NADC region than for Alberta.

Employment Ratios for the Northern Population

Group	NADC	Alberta	NADC Area Compared to Alberta
Total population 15 years & over	203,840	2,321,425	
Participation rate	76%	73%	+ 2%
Employment rate	71%	69%	+ 2%
Unemployment rate	6%	5%	+ 1%

Source: Statistics Canada, 2001 Census

Employment Ratios for Males

Group	NADC	Alberta	NADC Area Compared to Alberta
Males 15 years & over	105,185	1,155,135	
Participation rate	83%	80%	+ 3%
Employment rate	78%	76%	+ 2%
Unemployment rate	6%	5%	+ 1%

Source: Statistics Canada, 2001 Census

Employment Ratios for Females

Group	NADC	Alberta	NADC Area Compared to Alberta
Females 15 years & over	98,650	1,166,415	
Participation rate	68%	67%	+ 1%
Employment rate	64%	63%	+ 1%
Unemployment rate	6%	5%	+ 1%

Source: Statistics Canada, 2001 Census

2. Labour Force by Industry

Labour Force by Industry

Industry	NADC Area	Percent of NADC	Alberta	Percent of Alberta	NADC Area as a % of Alberta
All industries	152,740	100%	1,681,810	100%	9%
Agriculture, forestry, fishing & hunting	14,945	10%	84,470	5%	18%
Mining & oil & gas extraction	19,040	12%	85,945	5%	22%
Utilities	1,135	1%	13,600	1%	8%
Construction	14,450	9%	129,950	8%	11%
Manufacturing	8,365	5%	134,840	8%	6%
Wholesale trade	4,640	3%	75,705	5%	6%
Retail trade	15,555	10%	182,970	11%	9%
Transportation & warehousing	8,570	6%	92,490	5%	9%
Information & cultural industries	1,510	1%	39,155	2%	4%
Finance & insurance	2,625	2%	53,675	3%	5%
Real estate, rental & leasing	2,500	2%	30,720	2%	8%
Professional, scientific & technical services	4,680	3%	118,965	7%	4%
Management of companies & enterprises	55	0%	1,910	0%	3%
Administrative & support, waste management & remediation services	4,645	3%	63,805	4%	7%
Educational services	10,910	7%	109,100	6%	10%
Health care & social assistance	11,195	7%	149,950	9%	7%
Arts, entertainment & recreation	1,940	1%	32,240	2%	6%
Accommodation & food services	9,960	7%	122,220	7%	8%
Other services (except public administration)	7,260	5%	82,575	5%	9%
Public administration	8,960	6%	77,490	5%	12%

Source: Statistics Canada, 2001 Census

Economic and Demographic Profile of Northern Alberta

Male Labour Force by Industry

Industry	NADC Area	Percent of NADC	Alberta	Percent of Alberta	NADC Area as a % of Alberta
All industries	86,640	100%	913,220	100%	9%
Agriculture, forestry, fishing & hunting	10,610	12%	56,835	6%	19%
Mining & oil & gas extraction	16,340	19%	67,725	7%	24%
Utilities	940	1%	9,870	1%	10%
Construction	12,265	14%	112,725	12%	11%
Manufacturing	6,730	8%	101,095	11%	7%
Wholesale trade	3,490	4%	53,940	6%	6%
Retail trade	6,085	7%	79,920	9%	8%
Transportation & warehousing	6,390	7%	68,480	7%	9%
Information & cultural industries	580	1%	20,345	2%	3%
Finance & insurance	680	1%	17,720	2%	4%
Real estate, rental & leasing	1,240	1%	16,925	2%	7%
Professional, scientific & technical services	2,575	3%	68,275	7%	4%
Management of companies & enterprises	20	0%	845	0%	2%
Administrative & support, waste management & remediation services	2,090	2%	32,670	4%	6%
Educational services	2,780	3%	34,435	4%	8%
Health care & social assistance	1,360	2%	23,770	3%	6%
Arts, entertainment & recreation	800	1%	15,885	2%	5%
Accommodation and food services	2,885	3%	48,600	5%	6%
Other services (except public administration)	3,920	5%	41,480	5%	9%
Public administration	4,955	6%	41,670	5%	12%

Source: Statistics Canada, 2001 Census

Economic and Demographic Profile of Northern Alberta

Female Labour Force by Industry, 2001

Industry	NADC Area	Percent of NADC	Alberta	Percent of Alberta	NADC Area as a % of Alberta
All industries	66,040	100%	768,440	100%	9%
Agriculture, forestry, fishing & hunting	4,310	7%	27,735	4%	16%
Mining & oil & gas extraction	2,740	4%	18,260	2%	15%
Utilities	250	0%	3,745	0%	7%
Construction	2,200	3%	17,290	2%	13%
Manufacturing	1,625	2%	33,875	4%	5%
Wholesale trade	1,170	2%	21,870	3%	5%
Retail trade	9,475	14%	103,070	13%	9%
Transportation & warehousing	2,200	3%	23,980	3%	9%
Information & cultural industries	885	1%	18,760	2%	5%
Finance & insurance	1,950	3%	35,940	5%	5%
Real estate & rental & leasing	1,210	2%	13,710	2%	9%
Professional, scientific & technical services	2,135	3%	50,660	7%	4%
Management of companies & enterprises	35	0%	1,040	0%	3%
Administrative & support, waste management & remediation services	2,525	4%	31,105	4%	8%
Educational services	8,100	12%	74,755	10%	11%
Health care & social assistance	9,870	15%	126,280	16%	8%
Arts, entertainment & recreation	1,105	2%	16,420	2%	7%
Accommodation & food services	7,110	11%	73,585	10%	10%
Other services (except public administration)	3,330	5%	41,155	5%	8%
Public administration	3,855	6%	35,525	5%	11%

Source: Statistics Canada, 2001 Census

3. Labour Force by Occupation

Total Labour Force by Occupation

Occupations	NADC	Percent of NADC	Alberta	Percent of Alberta	NADC as a Percent of Alberta
Total labour force in all occupations	152,695	100%	1,681,735	100%	9%
Management occupations	13,025	9%	175,935	10%	7%
Business, finance & administration occupations	20,320	13%	290,460	17%	7%
Natural & applied sciences & related	7,175	5%	117,895	7%	6%
Health occupations	5,290	3%	81,850	5%	6%
Social science, education, government & religion	9,950	7%	117,475	7%	8%
Occupations in art, culture, recreation & sport	1,830	1%	37,570	2%	5%
Sales & service occupations	33,625	22%	394,550	23%	9%
Trades, transport & equipment operators & related	35,075	23%	283,090	17%	12%
Occupations unique to primary industry	20,245	13%	116,660	7%	17%
Processing, manufacturing & utilities	6,195	4%	66,235	4%	9%

Source: Statistics Canada, 2001 Census

Male Labour Force by Occupation

Occupations	NADC	Percent of NADC	Alberta	Percent of Alberta	NADC as a Percent of Alberta
Male labour force in all occupations	86,625	100%	913,170	100%	9%
Management occupations	8,615	10%	114,930	13%	7%
Business, finance & administration occupations	3,500	4%	69,795	8%	5%
Natural & applied sciences & related	6,015	7%	93,825	10%	6%
Health occupations	850	1%	15,910	2%	5%
Social science, education, government & religion	2,600	3%	39,210	4%	7%
Occupations in art, culture, recreation & sport	655	1%	16,035	2%	4%
Sales & service occupations	10,755	12%	161,090	18%	7%
Trades, transport & equipment operators & related	32,175	37%	263,130	29%	12%
Occupations unique to primary industry	15,990	18%	89,135	10%	18%
Processing, manufacturing & utilities	5,475	6%	49,970	5%	11%

Source: Statistics Canada, 2001 Census

Female Labour Force by Occupation

Occupations	NADC	Percent of NADC	Alberta	Percent of Alberta	NADC as a Percent of Alberta
Female labour force in all occupations	66,045	100%	768,485	100%	9%
Management occupations	4,345	7%	60,935	8%	7%
Business, finance & administration occupations	16,905	26%	220,790	29%	8%
Natural & applied sciences & related	1,250	2%	24,160	3%	5%
Health occupations	4,380	7%	65,790	9%	7%
Social science, education, government & religion	7,375	11%	78,295	10%	9%
Occupations in art, culture, recreation & sport	1,170	2%	21,515	3%	5%
Sales & service occupations	22,845	35%	233,340	30%	10%
Trades, transport & equipment operators & related	2,795	4%	19,805	3%	14%
Occupations unique to primary industry	4,180	6%	27,475	4%	15%
Processing, manufacturing & utilities	710	1%	16,310	2%	4%

Source: Statistics Canada, 2001 Census

4. Labour Force by Class of Worker

Total Labour Force by Class of Worker

Class of Worker	NADC	Percent of NADC	Alberta	Percent of Alberta
All classes of worker	152,670	100%	1,681,720	100%
Paid workers	136,580	89%	1,531,870	91%
Employees	127,410	83%	1,434,740	85%
Self-employed (incorporated)	9,165	6%	97,075	6%
Self-employed (unincorporated)	14,850	10%	141,355	8%
Unpaid family workers	1,265	1%	8,580	1%

Source: Statistics Canada, 2001 Census

Economic and Demographic Profile of Northern Alberta

Male Labour Force by Class of Worker

Class of Worker	NADC Area	Percent of NADC	Alberta	Percent of Alberta
All classes of worker	86,645	100%	913,200	100%
Paid workers	76,685	89%	823,130	90%
Employees	70,070	81%	752,755	82%
Self-employed (incorporated)	6,590	8%	70,445	8%
Self-employed (unincorporated)	9,595	11%	87,775	10%
Unpaid family workers	330	0%	2,265	0%

Source: Statistics Canada, 2001 Census

Female Labour Force by Class of Worker

Class of Worker	NADC Area	Percent of NADC	Alberta	Percent of Alberta
All classes of worker	66,040	100%	768,440	100%
Paid workers	59,875	91%	708,675	92%
Employees	57,305	87%	681,955	89%
Self-employed (incorporated)	2,615	4%	26,930	4%
Self-employed (unincorporated)	5,215	8%	53,470	7%
Unpaid family workers	930	1%	6,285	1%

Source: Statistics Canada, 2001 Census

E. INDUSTRY

1. Agriculture

There are approximately 10,096,232 acres of agricultural land in the NADC area. The North accounts for roughly 20 per cent of the province's farms and 19 per cent of the province's farmland. This northern agricultural land is located in two distinct regions. One of these extends from the Athabasca area east to St. Paul and the Saskatchewan border. The other region encompasses an area from Grande Prairie to High Prairie and north to High Level and Fort Vermilion. This second region contains Canada's most northern agricultural land. Long hours of sunlight during the summer help compensate for a short growing season.

Number of Farms and Number of Acres Farmed

	NADC Area	Alberta	NADC Area Percent of Alberta
Number of Farms	10,636	53,652	20%
Acres	10,096,232	52,058,898	19%

Source: Alberta Agriculture, Food and Rural Development, 2001 Census of Agriculture

Wheat, barley and canola are the most popular crops in the North. These three crops and oats made up most of the grain harvest in 2001. Alfalfa and tame hay have become important crops grown in the region, making up 28 per cent of the alfalfa and 31 per cent of all the hay produced in Alberta. Although the forage seed produced in the North accounts for only seven per cent of the region's crops, it makes up 85 per cent of all the forage seed grown in Alberta.

Field Crops Grown

Crops	Acres Grown in NADC Area	Percent of NADC Area Crops	Acres Grown in Alberta	Percent of Alberta Crops Grown in NADC Area
Wheat	1,060,251	21%	6,852,596	15%
Oats	348,837	7%	1,364,674	26%
Barley	553,009	11%	4,902,090	11%
Rye	7,674	.2%	117,138	7%
Canola	768,003	15%	2,660,509	29%
Flaxseed	10,077	.2%	40,219	25%
Alfalfa / Alfalfa Mixtures	1,113,334	22%	3,915,607	28%
Tame Hay / Fodder	711,678	14%	2,279,767	31%
Dry Field Peas	100,893	2%	608,217	17%
Forage Seed for Seed	347,158	7%	409,251	85%

Source: Alberta Agriculture Food and Rural Development, 2001 Census of Agriculture

Economic and Demographic Profile of Northern Alberta

Cattle are the predominant livestock choice of northern farmers making up over 80 per cent of the livestock head count in the north. Hogs remain an important part of livestock production. Approximately one quarter of Alberta's goat, deer and elk herds are located in this region. Bison are very hardy and do well in the northern climate. They continue to grow in importance in the north making up over one-third of the province's bison population.

Livestock Production

Livestock Type	Number of Livestock in NADC Area	Percent of NADC Area Livestock Production	Number of Livestock in Alberta	Percent of Alberta Livestock in NADC Area
Cattle & Calves	741,136	80%	6,615,201	11%
Hogs	61,820	7%	2,027,533	3%
Sheep & Lambs	40,261	4%	307,302	13%
Goats	9,959	1%	42,270	24%
Horses & Ponies	27,624	3%	159,962	17%
Bison	29,290	3%	79,731	37%
Deer & Elk	9,626	1%	39,635	24%

Source: Alberta Agriculture Food and Rural Development, 2001 Census of Agriculture

Northern Alberta is well known for its honey production. One-quarter of the province's farms that produce honey are found in the north. The north is also home to well over one-third of Alberta's bee colonies.

Farms with Bees Colonies

	NADC Area	Alberta Total	NADC Area as a Percent of Alberta
Number of Farms with Colonies of Bees	119	467	25%
Number of Colonies of Bees	77,128	209,821	37%

Source: Alberta Agriculture Food and Rural Development, 2001 Census of Agriculture

Economic and Demographic Profile of Northern Alberta

Gross farm receipts in the NADC region amounted to over \$910 million or about nine per cent of Alberta's total gross farm receipts when the Census of Agriculture was taken.

Gross Farm Receipts for the NADC Area

Municipality	Number of Farms	Gross Farm Receipts	Percent of Alberta total
Athabasca County No. 12	960	\$66,144,391	0.7%
Birch Hills County	324	\$45,211,536	0.5%
Bonnyville No. 87	958	\$69,854,784	0.7%
Clear Hills No. 21	572	\$41,826,800	0.4%
East Peace No. 131	244	\$34,391,281	0.3%
Fairview No. 136	325	\$32,258,002	0.3%
Grande Prairie County No. 1	1,443	\$121,739,538	1.2%
Greenview No. 16	821	\$50,780,742	0.5%
Lakeland County	387	\$23,992,819	0.2%
Lesser Slave River No. 124	178	\$8,357,810	0.1%
Mackenzie No. 23	658	\$43,891,127	0.4%
MD of Big Lakes	467	\$31,471,631	0.3%
Northern Lights No. 22	639	\$47,343,770	0.5%
Peace MD No. 135	217	\$17,557,434	0.2%
Saddle Hills County	574	\$56,621,656	0.6%
Smoky River No. 130	485	\$78,359,475	0.8%
Spirit River No. 133	163	\$17,270,558	0.2%
St. Paul County No. 19	900	\$101,756,484	1.0%
Woodlands MD No. 15	321	\$21,920,538	0.2%
Opportunity MD No. 17	n/a	n/a	n/a
Regional Municipality of Wood Buffalo	n/a	n/a	n/a
Improvement District No. 24	n/a	n/a	n/a
NADC Area Total	10,636	\$910,750,376	9.2%
Alberta Total	53,652	\$9,919,447,223	
NADC Area as a Percent of Alberta	20%	9.2%	

Source: Alberta Agriculture, Food and Rural Development, 2001 Census of Agriculture

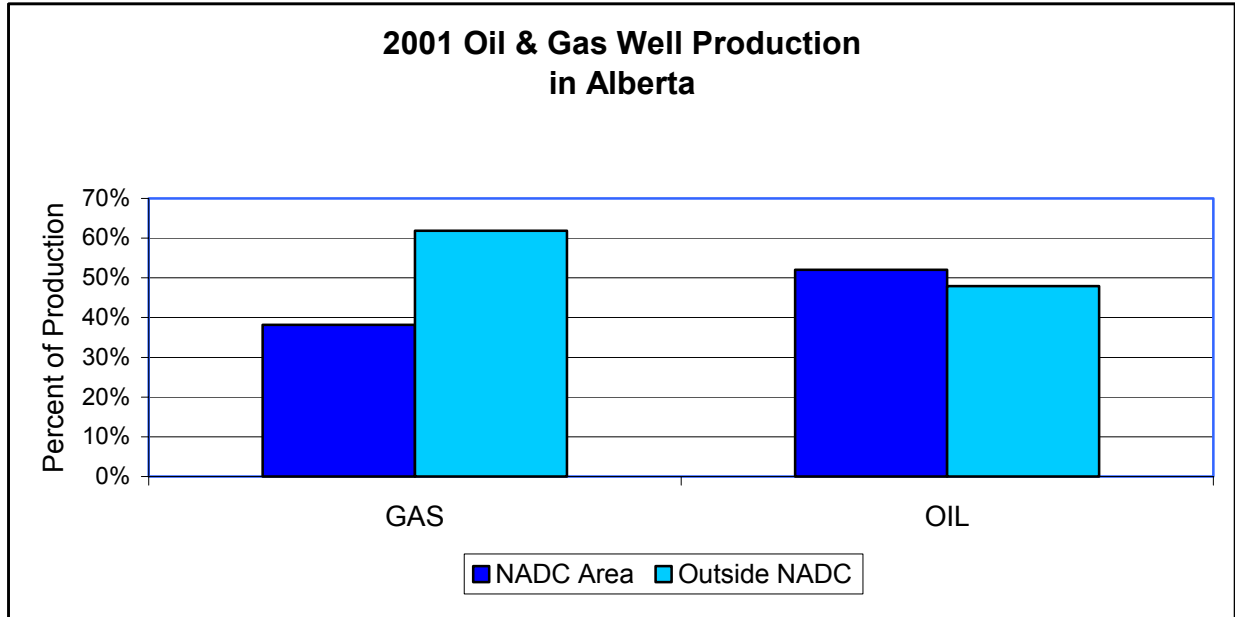
Symbol
n/a

Definition
Figures not appropriate, not applicable or not available.

2. Oil, Gas and Oilsands

The NADC region contains about 55 per cent of the province’s available land for oil and gas development. This region produces over half of the province’s oil and well over one-third of Alberta’s natural gas.

Condensate (CND) refers to hydrocarbons, usually produced with natural gas, which are liquid at normal temperature and pressure. These natural gas liquids include ethane, propane, etc.



Source: Alberta Energy

2001 Conventional Oil and Gas Production

Oil & Gas Production	NADC	Alberta	NADC Area Production as a Percent of Alberta
GAS e3m3	66,395,982	174,023,651	38%
OIL m3	31,034,075	59,633,862	52%
CND m3	144,313	458,988	31%

Source: Alberta Energy

Economic and Demographic Profile of Northern Alberta

The North is home to all of the province's oil sands. This valuable resource is located in three regions in the North: the Peace River Oil Sands, the Athabasca Oil Sands and the Cold Lake Oil Sands.

2003 Oilsands Production

Initial Volume in Place	1.6 Trillion barrels
Remaining Ultimate Potential	311 Billion barrels
Production (Marketable)	882.5 Thousand barrels per day
Royalties	\$183 Million (fiscal 2002-03)
Employment (Total oil, gas & oil sands)	95.4 Thousand* (direct upstream)
Cumulative Investment	\$ 24 Billion (1996-2002* CAPP)
Investment	\$ 6.7 billion (2002* CAPP)

Source: Alberta Energy

Symbol

+

*

Definition

Statistics Canada Labour Force Survey

2003 Canadian Association of Petroleum Producers (CAPP) - not yet published

3. Forest Industry

Most of Alberta's forested land is located in the NADC area. The majority of the northern forest is close to an equal mix of coniferous and deciduous trees. The exception to this is the Athabasca region, which is mostly coniferous.

Northern Alberta produces most of the province's lumber, panelboard and pulp and paper. However the production of value-added forest products in the North is still a fledgling industry. Value-adding is an area of anticipated growth.

Forest Industry Employment

Employment Type	NADC	Alberta	NADC as Portion of Alberta
Employment Total	15,419	24,195	64%
Direct	7,273	11,352	64%
Indirect & Induced	8,145	12,843	63%

Source: Alberta Sustainable Resource Development; Alberta Forest Products Association, Overview and Economic Impact, 2001

Forest Industry Production Capacity

Production Type	NADC Area	Alberta	NADC Area's Portion of Alberta
Sawmill (board feet)	1,991,254,000	2,800,000,000	71%
Pulp & Paper (air-dried metric tonne)	1,980,000	2,250,000	88%
Panelboards (square feet)	1,621,000,000	2,120,000,000	76%
Value-added (board feet)	4,000,000	450,000,000	1%

Source: Alberta Sustainable Resource Development; Alberta Forest Products Association, Overview and Economic Impact, 2001

Forest Industry Revenue

Revenue Generated	NADC Area	Alberta	NADC Area's Portion of Alberta
Revenue Total *	\$6,300.0	\$8,400.0	75%
Direct *	\$3,751.7	\$4,900.0	77%
Indirect & Induced *	\$2,627.6	\$3,500.0	75%
Provincial Corporate Income Tax *	\$123.7	\$188.4	66%
Provincial Personal Income Tax *	\$129.4	\$197.0	66%
Property Tax *	\$75.1	\$114.2	66%
Stumpage / Protection Charges *	\$46.7	\$71.4	65%
Expenditure Total *	\$7,000.0	\$10,700.0	65%
Direct *	\$2,599.9	\$4,000.0	65%
Indirect *	\$4,419.7	\$6,700.0	66%

Source: Alberta Sustainable Resource Development; Alberta Forest Products Association, Overview and Economic Impact, 2001

Symbol

*

Definition

Amount shown in millions of dollars

4. Other Industries

Tourism

Tourism remains a very active industry in northern Alberta. The area's abundant lakes, forests and wildlife provide excellent resources for this industry. Hunting, sport fishing, water sports, camping and adventure tourism attract people from across Canada and around the world. Added to the outdoor recreation activities are historic, cultural and urban attractions.

In recent years, a substantial increase in visitors to western Canada from the U.S. has occurred, many of them traveling to the North. The many resources that northern Alberta has to offer the tourism industry continue to provide an environment that encourages growth. Recently, Travel Alberta reported a 26 per cent increase in northern tourism revenues.

Mining

The NADC region contains about 55 per cent of the province's available land for mineral and oil and gas development. This adds to the immense resource exploration and development potential such as mining, new commercial ventures and value-added activities. Mining includes exploration, development and commercialization stages. Each stage provides many spin-off benefits. Although commercial mining is still on the horizon in Northern Alberta, in 1999 alone more than \$70 million was spent on gold, diamond, precious gem and base metal exploration. In 2004, iron ore deposits were added to the possible areas of development. There have been some encouraging discoveries throughout northern Alberta.

Value-Added Industries

Northern Alberta is reliant on primary resource activities. As demand and markets change, there is huge potential for northern Alberta to add value to products in the oil and gas, agriculture and forestry sectors.

Investment/Construction Projects

The high level of investment in the various sectors in the north is illustrated in the following table. This list contains major projects valued at over \$2 million within the NADC region. These are projects that have been proposed, are currently under way or have recently been completed.

Major Projects in the NADC Region, December 2004

Sector	Value in Millions of Dollars
Agriculture & Related	\$25.6
Chemicals & Petrochemicals	\$12.0
Commercial/Retail	\$83.5
Forestry & Related	\$631.0
Infrastructure **	\$2,382.6
Institutional	\$449.4
Mining	\$193.0
Oil & Gas	\$85.5
Oilsands **	\$60,797.0
Other Industrial	\$109.2
Pipelines **	\$1,908.4
Power	\$175.0
Residential	\$69.2
Telecommunications **	\$300.0
Tourism/Recreation **	\$198.5
Total	\$67,419.9

Source: Alberta Economic Development

Symbol

**

Definition

Projects that extend beyond the NADC region